



Waldo Fernandez

Rosette Delug

Tom Christie



Jesse Williams



Rosson Crow

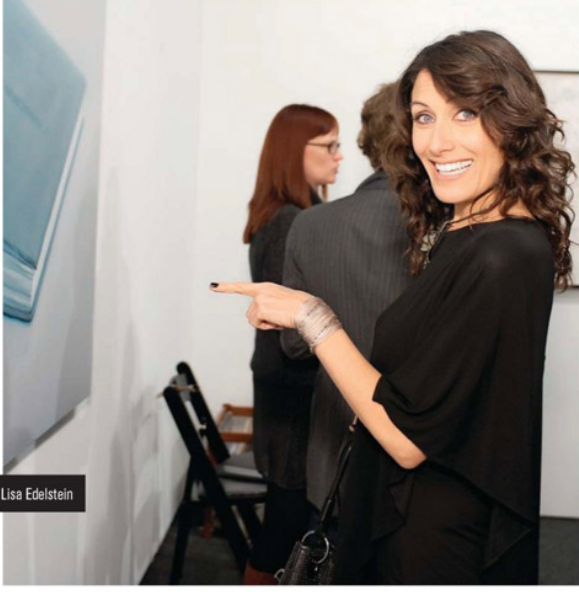
Maggie Kayne

Rick Rubin



Neil Patrick Harris

David Burtka



Lisa Edelstein



Eugenio Lopez

Esthella Provas

ON THE SCENE

Art Attack

VIP opening night at Art Los Angeles Contemporary

THE PARTY Artists, celebrities and CEOs rubbed shoulders at the sneak preview of Art Los Angeles Contemporary's second annual art fair at Santa Monica Airport's Barker Hangar.

THE PLAYERS Tim Fleming, Lauri Firstenberg, David Burtka, Eva La Rue, Gilles Marini, Jane Seymour, Honor Fraser, Merry Norris, Tia Barr, Rachel Griffiths, Jennifer and Peter Franciosa, Robert Galstian, Christine Nichols, Ronnie Sassoon, John Yoon, Cindy Schwartz

THE HIGHLIGHTS Art enthusiasts marveled at the works on display from some 11 countries and 70 galleries. No stagnant watercolors here—Andrew Schoultz's 11-by-20-foot *Monument to a Whirlwind* dominated an entire wall with mixed media and attracted ogglers like Neil Patrick Harris and partner David Burtka, while the always-esoteric Chinatown culture shop Ooga Booga showcased such hard-to-find publications as European design mag *Apartamento*. —Robert Garrova

PHOTOS BY STEFANIE KEENUN/WIREIMAGE